



IP66 E Series Triproof Light

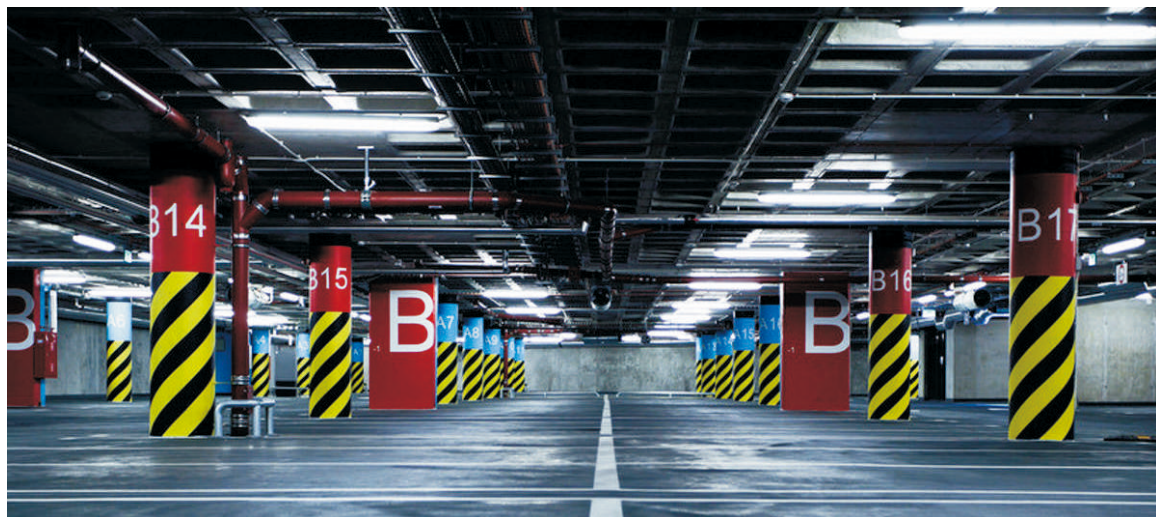
A5

·Universal Application



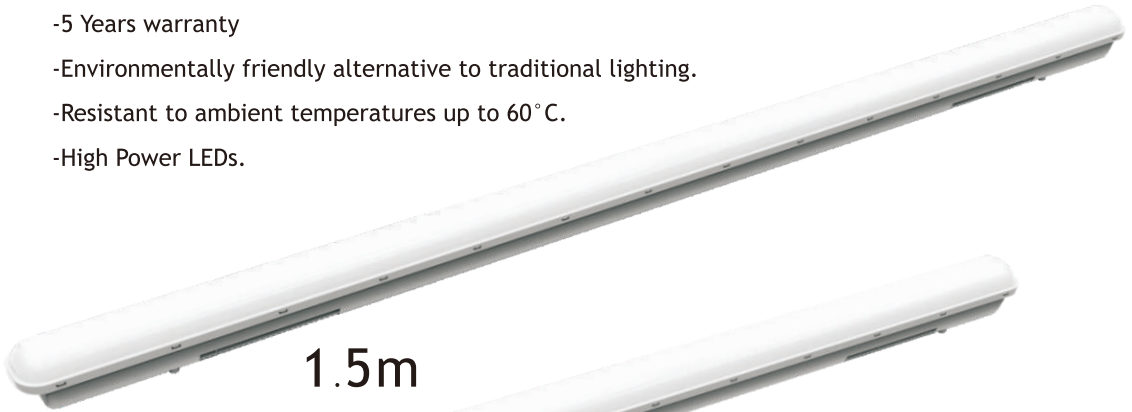
SEMI-OUTDOOR

IP66 E Series Triproof Light^{A5}

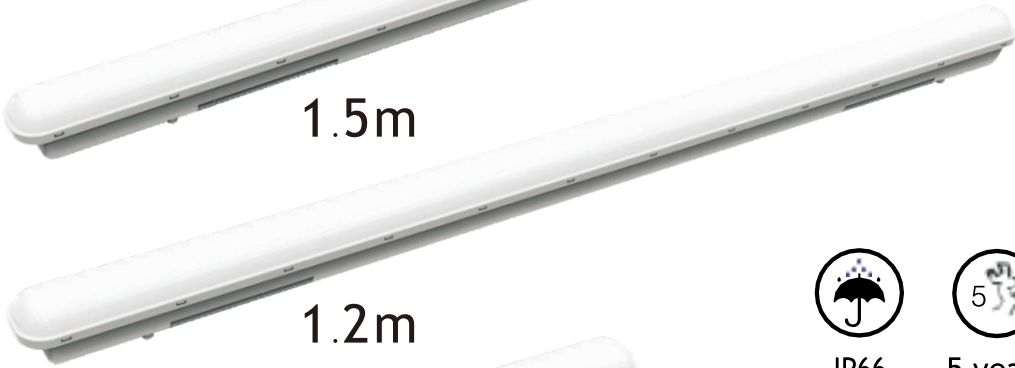


1.Features

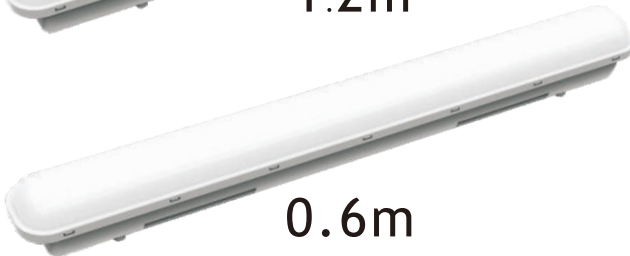
- Lifetime over 50.000 hours.
- 5 Years warranty
- Environmentally friendly alternative to traditional lighting.
- Resistant to ambient temperatures up to 60°C.
- High Power LEDs.



1.5m



1.2m



0.6m



IP66



5 years
warranty



2.Parameter

0.6M

Item Code	Power	Lumens	Lm/W	LED type
LU-TPE-0615W	15W	1800	120	SMD 2835

1.2M

Item Code	Power	Lumens	Lm/W	LED type
LU-TPE-1220W	20W	2400	120	SMD 2835
LU-TPE-1236W	36W	4320	120	SMD 2835

1.5M

Item Code	Power	Lumens	Lm/W	LED type
LU-TPE-1530W	30W	3600	120	SMD 2835
LU-TPE-1550W	50W	6000	120	SMD 2835

3.Technical Specifications

LED Type:	SMD2835
Input Voltage:	220-240VAC 50/60HZ
Ambient temperature:	-20°C ~ +50°C
Watts:	15W, 20W, 36W, 30W, 50W
Beam Angle:	120°
Luminous Efficiency:	120Lm/W
Colour:	Grey
Mateial:	PC

Driver:	Osram driver
Lumen maintenance:	> 50,000hours

Protection Rate:	IP66
Colour Temperature:	2700k - 6500k
Warranty:	5 years



Dimmable



Motion sensor



Emergency



4. Installation method

A Turn off the power.

OFF

B

① Drill $\varnothing 6\text{mm}$ holes according to below drawing.

② Insert $\varnothing 6\text{mm}$ expansion pipe in the wall, fix the mounting bracket by M4 screw.

C Loosen the nut of the cable gland, put the cable through the cable gland.

D Connect the cable on the terminal block as below shown and tighten the cable gland.

E Tighten the connector under instruction in turn

F Close the diffuser

F Fix the lamp on the wall

G Turn on the power.

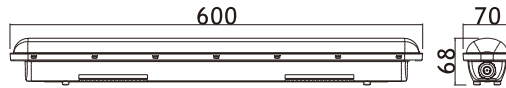
ON

Safety Notice:

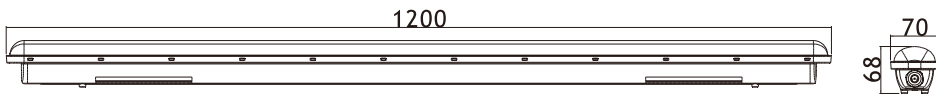
- 1. Electrical installation should be done by registered electrician only.
- 2. Disconnect the luminaire from supply and wait until luminaire is cooled down, before replacement of the driver.
- 3. Never touch the lamp while luminaire is switched on.
- 4. In any case of malfunction disconnect luminaire from supply immediately, don't try to repair the luminaire yourself, repair should only be done by official service agent.

5. Product Dimension

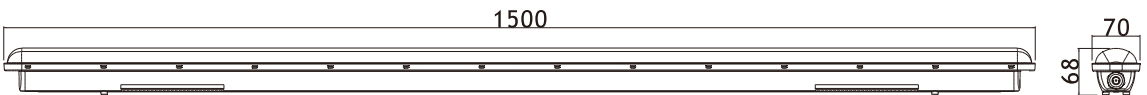
0.6M



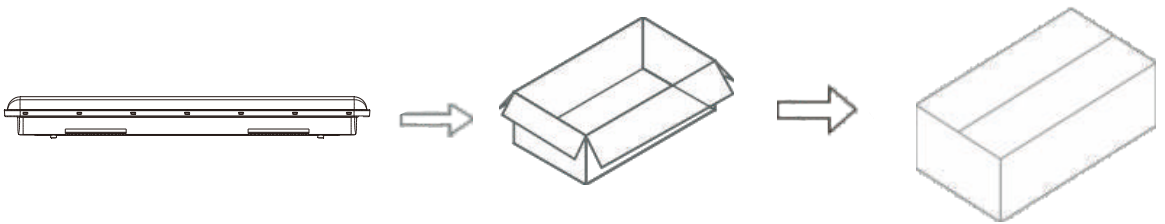
1.2M



1.5M



6. Packaging



Length	Carton Size(mm)	PCS/CTN
0.6m	700*235*312	12
1.2m	1230*235*235	9
1.5m	1530*235*235	9