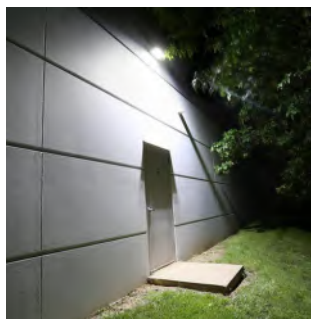


IP66 LED Wall Pack WLS



SPECIFICATION

IP66 LED Wall Pack WLS



Caution

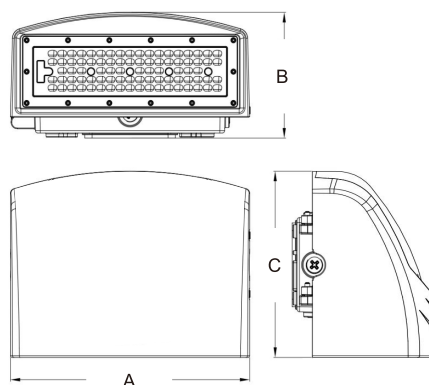
- Please read the user manual before installation.
- Please install, connect and test the lamp according to local regulations. Lamps should always be installed or replaced with care by professional person.
- Ensure the power is switched off before installation.
- Please check whether the lamps are broken or not during shipping, broken items cannot be used anymore.
- Please keep the lamps and accessories away from kids to avoid hurt by mistakes.
- For protecting eyes, please do not watch the luminous surface for a long time.
- Do not cover anything on lamp and keep lamps away from fire or high temperature objects.
- Incorrect installation and using, keep the right to refuse after-sales service for those disassembled or repaired items.
- Switch the power off and cool down the lamp before cleaning.
- The lamp is only suitable for weak acid and weak base environment.

Features

- Water-proof, Dust-proof, Damp-proof, Pressure-proof.
- High luminous efficiency 130LM/W.
- Excellent heat dissipation support stable quality.
- Convention installation for linking in series.
- High impact test, IK10.
- Long lifespan 100,000 hours.
- Energy saving up to 80%.
- 5 years warranty.

Application

- Parking place
- Tunnel / Corridor / Gallery
- Railway / Bus / MTR Station
- Warehouse / Factory
- Airport
- Exhibition Hall
- Supermarket
- Gas station



	A	B	C
50W	320	129	128
100W	362	234	212
120W	362	234	212

Temperature Characteristics T-ambient 40°C

Temperature

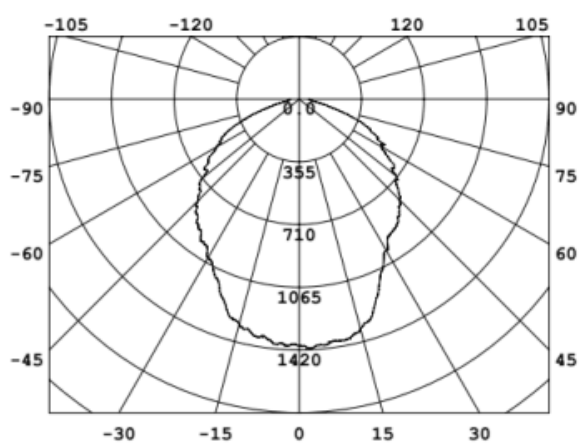
Operating: -20 ~ +50°C

Storage: -40 ~ +85°C

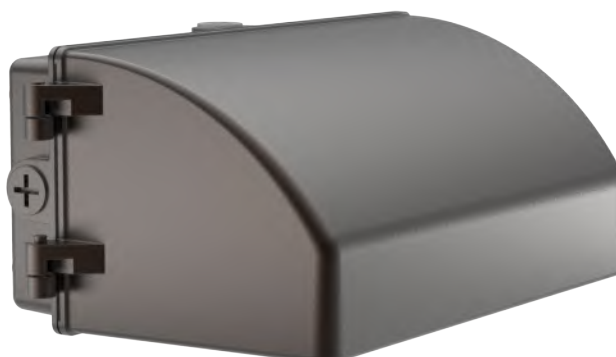
PARAMETER

Model No.	LU-WLS-50W/100W/120W
Material	AL Body and Glass Cover
Paint	Bronze / Black / White
Size(mm)	50W:320*129*128mm
	100W:362*234*212mm 120W:362*234*212mm
Input Voltage	AC85-265V
Power	50W/100W/120W
Chips	SMD2835
Driver	Mearwell Driver / LUCCA Driver
P.F.	>0.9
Luminous Flux	6500/13000/15600lm
Luminous Efficiency	130lm/W
CRI	>80Ra
Beam Angle	120
IP Level	IP66

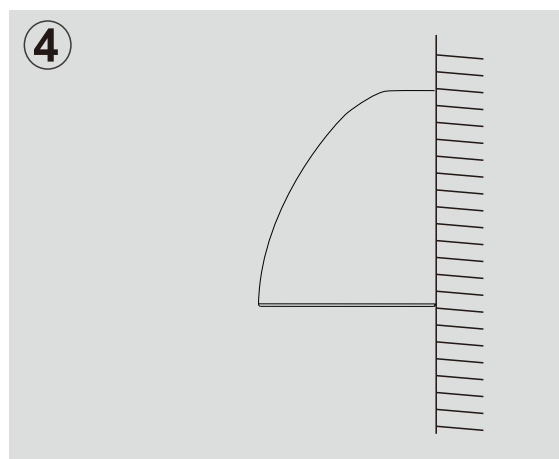
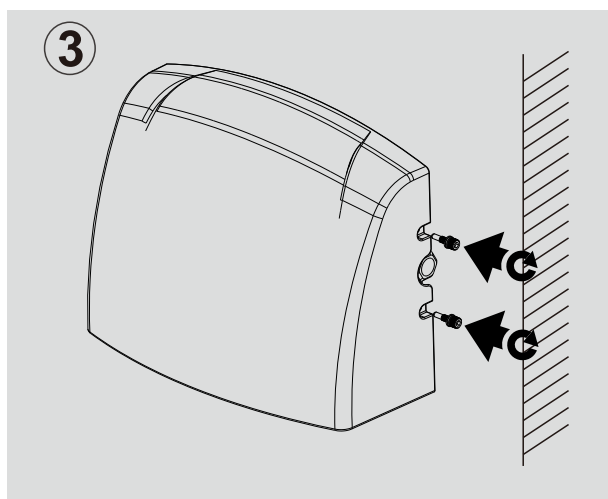
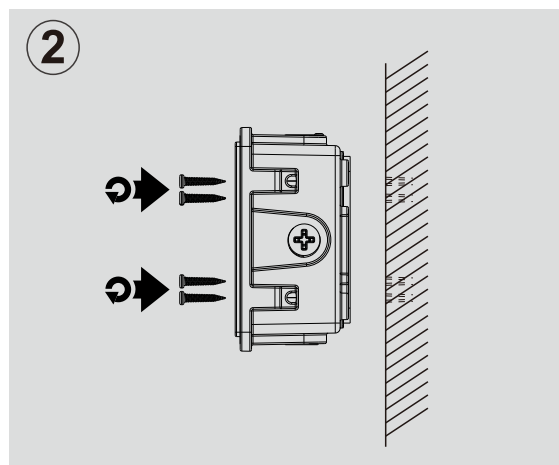
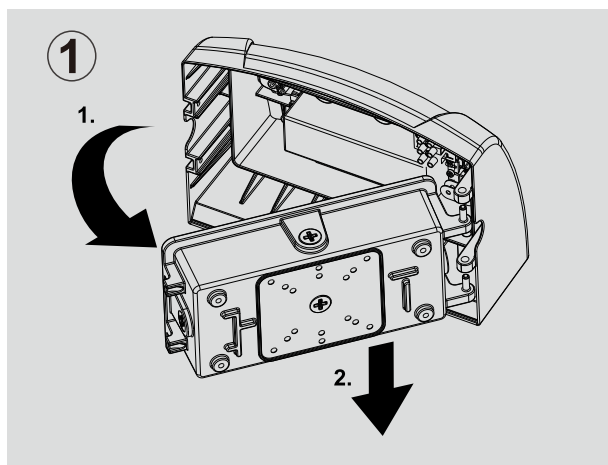
PARAMETER



Height	Avg./Nadir.E	Angle:102.60deg	Diameter
0.5m	1896.38/5582.48lx		124.82cm
1.0m	474.09/1395.62lx		249.64cm
1.5m	210.71/620.28lx		374.46cm
2.0m	118.52/348.91lx		499.28cm
3.0m	52.68/155.07lx		748.92cm



INSTALLATION INSTRUCTIONS



PACKAGE

Item code	Pcs/Ctn	Carton Size	G. W.(kg) /CTN
LU-WLS-50W	2	520*310*260mm	5.9kg
LU-WLS-100W	2	520*310*260mm	6.0kg
LU-WLS-120W	2	520*310*260mm	6.0kg